



©2009 ~ R Wilcoxon

## Belt & Monogrammed Buckle



This is how I made a belt & monogrammed buckle

It's easiest to use an old belt that fits you as a guide in making a new belt.

### **SUPPLIES NEEDED:**

#### **BELT:**

\*Cotton webbing 1 ¼" x length needed. I measured an old belt and added 8". This is the length of webbing I bought.

\*Fabric for belt accent 4" x length of webbing and 2 pieces 2 ½" x 2 ¾". I used cotton fabrics

\*Décor Bond 2" x length of fabric

\*Large Eyelet Kit ¼". I used Dritz

#### **BUCKLE:**

\*Metal Buckle – I get mine from Peggy @ <http://www.blankcankoozies.com>

\*Fabric 1 piece 5" x 6"

\*Warm & Natural batting 1 piece 5" x 4"

\*Felt 1 piece 5" x 4" This will be used to cover the back side of the buckle. Use a color that matches your fabric.

Strong glue to secure fabric to buckle.

Press and starch all fabrics

### **MAKING THE BUCKLE**

If you want to add a monogram or design to the buckle, open the EG Buckle file and center your design in the oval shape.

The letter I used in my sample is 1.90" high.

Note that the oval is larger than the front of the buckle. The oval is a cutting guide. It allows for the edges to be brought to the back side of the buckle.

Hoop tear away stabilizer. Place the 5"x6" piece of fabric over the stabilizer.

1.Oval cutting guide

Sew your design.  
Remove design from hoop. Cut along the oval, cutting off the stitching.  
Carefully, remove stabilizer.

Print the EG Buckle Batting Template  
Using the template, cut a piece of Warm & Natural.  
Use adhesive spray to secure the batting to the front of the buckle. The batting will be slightly larger than the buckle.

Spray the back side of the embroidered piece. Center it over the buckle.  
Snip around the edge of the oval with sharp scissors. Make small snips. Do not cut all the way to the buckle or you will have little 'bumps' along the edge.  
Fold the excess to the back side of the buckle. Work slowly and neatly.  
Glue the excess to the back of the buckle all around.  
Periodically, check the front side to make sure the edge looks nice and tight.

To finish off the back side of the buckle, use the EG Buckle Back Template as a guide to cut the matching felt.  
Glue it to the back side. Work slowly and neatly. The felt should not be seen from the front side.



~ ~ ~ ~ ~

## MAKING THE BELT

Fold the strip of fabric in half lengthwise and press. Open up and fold each long edge into the center and press.

Fold in half again. Press.

Open up the strip. You will have 4 sections.

Fuse a piece of Décor Bond down the center of the strip.

Fold the long edges back to the center. Press.

Fold strip in half and press.

You now have a long strip that is 1" wide with no raw edges exposed.

Place the strip down the center of the webbing. I used a few binder clips to hold the strip on the webbing.

Sew the strip to the webbing close to each long edge of the fabric strip.

Now you're going to finish off the end of the strip that will attach to the buckle.

Place one of the 2 1/2"x2 3/4" pieces as shown below



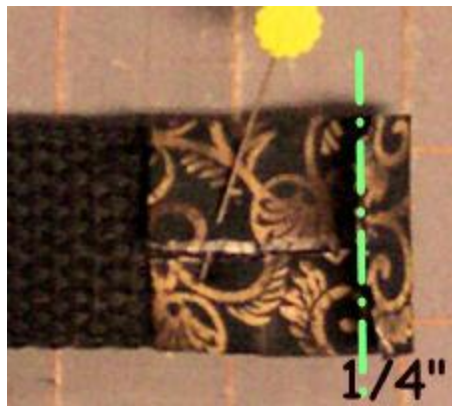
Place the piece right side down over the right side of the belt. Place one of the 2  $\frac{3}{4}$ " edges even with the end of the belt.  
Sew, using a  $\frac{5}{8}$ " seam (shown by the dash & dot line above)



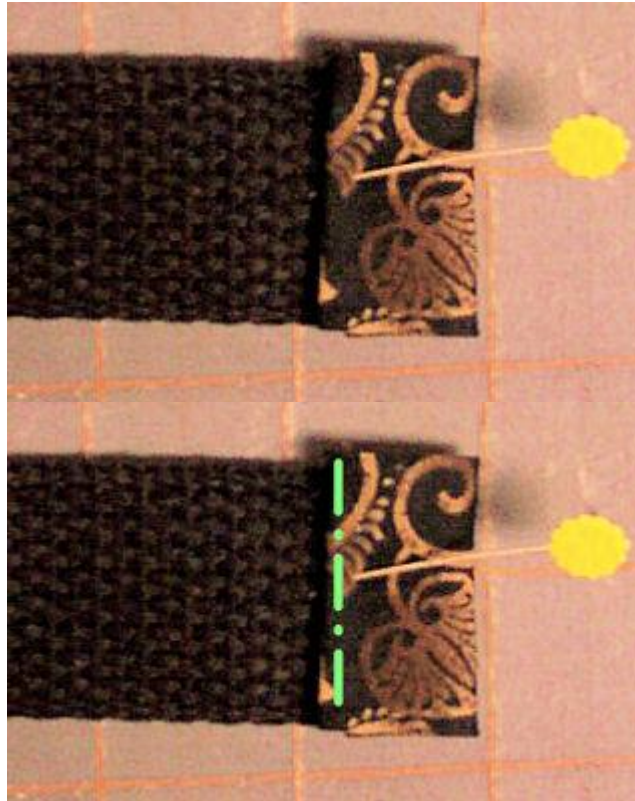
Fold the piece to the right side, press.  
Turn the belt to the back side.



Fold the 2 side edges in. Press.



Fold the end down  $\frac{1}{4}$ ". Press.



Fold down again. There are now no raw edges exposed.  
Make sure everything is lined up and pressed.  
Sew close to the edge through all layers.

Turn buckle to the back. Insert finished belt end through hardware on back of buckle.



Sew through all layers to secure.

Note: I securely hand sewed the belt as I felt it was too thick for my machine to sew through.

Lay your belt over your old belt. Use the holes in the old belt and mark them onto your new belt.  
Insert the large eyelets over the marks following the directions on the package.

Measure the finished length of the old belt.  
Trim off the new belt to this length. You may want to double check the length before cutting by trying on your belt.

Finish off the remaining end as above using the remaining 2 1/2" x 2 3/4" piece of fabric.



©Embroidery Garden ~ R Wilcoxson  
**ALL RIGHTS RESERVED**